

"New"

Reverse Osmosis System Controller

For O.E.M. Manufacturers of RO Systems

ESDI Model 258



See Price List for Current Pricing

The ESDI Model 258 Reverse Osmosis System Controller is a low cost electronic controller that performs all of the functions necessary to reliably operate an industrial/commercial Reverse Osmosis Water Purification System. This controller incorporates several flush cycles that help increase membrane life, along with other features that make it cost effective and easy to install. Comes with a two-year Warranty. Your satisfaction is guaranteed.

The Model 258 is Perfect for Manufacturers of Reverse Osmosis Systems who wish to lower their production costs by outsourcing the electronic controls for their standard systems. The Model 258 is assembled in the USA and manufactured in compliance with UL-508, and IEC Standard 1000-4-4 part 4 for EMI noise interference.

Contact us if you require software changes to suit your specific requirements.

Features:

- Automatically maintains water storage Tank Level, using single float, or pressure switch.
- Controls Water Inlet Relay & Membrane Flush Relay. All outputs have isolated contacts rated to 240VAC.
- Lockout Input will shut down operation during Pre-treatment Regeneration.
- Pressure Switch Input will shut down the Pump for 5 minutes if the pressure is bad.
- Automatic Membrane Flush Cycles have switch selectable Flush Times and Frequencies.
- Program Switch enables 10 Minute Restart Delay, and 24 hour Full Tank Membrane Flush.
- Primary DPST Power Switch & Pump Relay are rated for 1HP @ 120VAC and 2HP @ 240VAC.
- Panel has Six LED Status Indicators and seven easy access Program Switches.
- Primary Power is switch selectable for either 115VAC, or 230VAC operation at 50/60 Hz.
- Internal Power Board has Pump & Board Fuses, and convenient Power Distribution Terminals
- Enclosure Size: 6" X 6" X 4", NEMA 4X Indoor Rated.

Electronic Systems Design, Inc.

1010 North Maclay Avenue - San Fernando, California 91340 USA

Phone: (818) 365-0864 - Fax: (818) 365-1308 - Web: www.esdi.net

ESDI Model 258 Separate Components (Effective: May 26, 2010)



Model 258 with Enclosure:

This configuration comes complete with NEMA 4 indoor enclosure, power transformer, fuses and power switch. Just wire it up and it's ready to go to work.

Part No. 000258

Contact us for current pricing



The Model 258 RO Controller components can be purchased separately.

Please choose the configuration that best conforms to your application.

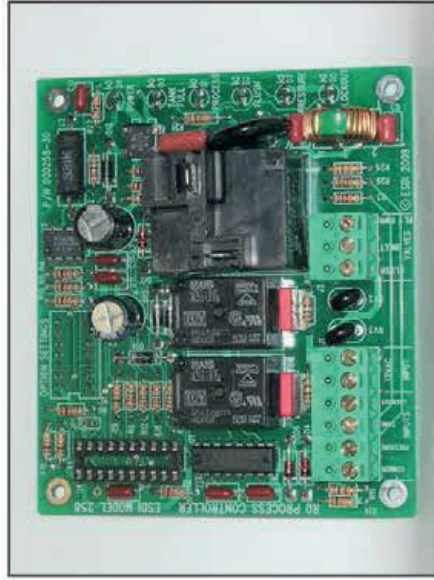


Model 258 Circuit Board with Panel:

If you have your own enclosure, or need to control additional relays, then simply cut out an opening on the front of your enclosure and mount the Model 258 control board with panel.

Part No. 000258-2

Contact us for current pricing

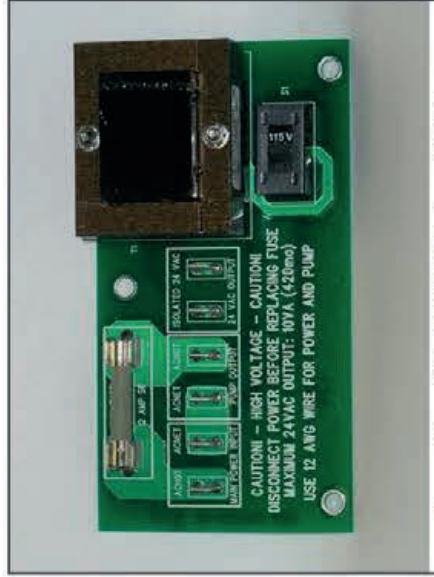


Model 258 Circuit Board Alone:

Lowest cost, if you want the controller and have your own enclosure. For your convenience, the indicators and switches can be installed on either side of the board.

Part No. 000258-1

Contact us for current pricing

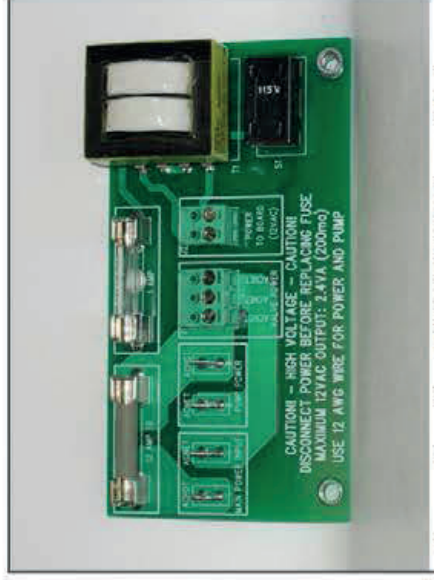


Power Board for 24VAC Relays & Valves:

This board provides 24VAC power to run the Model 258 controller, and to drive 24VAC relays and/or valves (420 milliamps maximum). It also provides a 115/230VAC power selection switch, a pump fuse and convenient terminals for easy power distribution.

Part No. 000255D

Contact us for current pricing



Power Board for 115/230VAC Relays & Valves:

This board provides 12VAC power to run the Model 258 controller only. It also provides a 115/230VAC power selection switch, a pump fuse and convenient terminals for easy power distribution to relays and valves. This board comes standard with the Model 258

Part No. 000258-PB

Contact us for current pricing